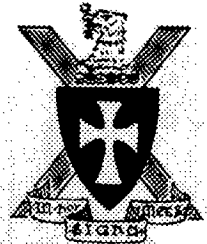


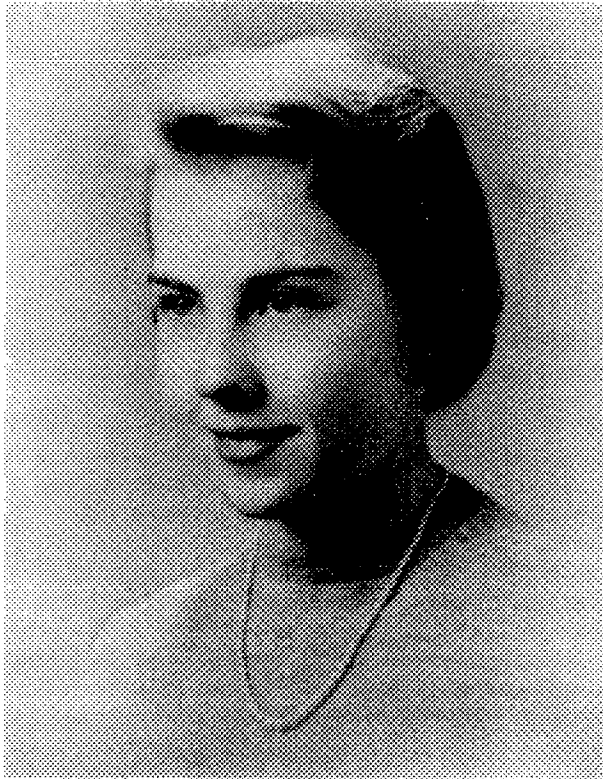


# Beaver Sig



MARCH 1957

ALPHA THETA OF SIGMA CHI



## SWEETHEART CHOSEN FOR 1957

During Alpha Theta's Sweetheart Ball March 1st, our choice of sweetheart for 1957 was announced. She is Ann Gustafson, a delightful and captivating sophomore at Wellesley College. The White Cross she wears belongs to Bill Brandon, one of our flock of senior electrical engineers. Ann hails from Worcester, Mass., and is majoring in political science. Even though Ann and Bill are majoring in diverse fields, they find a common field of interest in the arts. Many an afternoon will find them at the Museum of Fine Arts, Symphony Hall, or the Opera House. They have recently been introduced to skiing and are rumored to be navigating the slopes quite well. We are all proud of Ann and wish her a happy and rewarding future.

## WHITE ROSE TO --

Married - Joel Searcy '57 and Elaine Belisle.  
 Pinned - Lee Fister '57 and "Pi" Van Alstyne,  
 Wellesley; John Decker '57 and Linda McCullough,  
 Radcliffe; George Pillorge '59 and Andy Blamire,  
 MGH; Bill Brandon '57 and Ann Gustafson, Wellesley.

## SCHOLARSHIP DEPARTMENT "SIGS" First On Campus

Alpha Theta chapter is indeed proud of its record in scholarship for the first term of the 1956-57 year. After being ranked ninth in fraternity standings in the last term of the 1955-56 year, we have now achieved a goal which we have for some time sought and worked for. In fraternity standings, Alpha Theta finished first on campus. It was only by the hard work and co-operation of all the brothers that this was made possible. Of forty-two members, we had thirteen men on the dean's list, and five of these were on first dean's list. Our house average was 3.55, the general undergraduate average being 3.23 and the general fraternity average being 3.18.

At the scholarship banquet held on the night of Feb. 23, a banquet which this year was held with good cause, the trophies for highest achievement and greatest improvement were presented. The high honors awards went to Huber Warner, a transfer student from Ohio Wesleyan on the 3-2 plan. In his first term at MIT, Hube got a 4.83. The award for advancement went to Bob Murphy, who got a 4.61, a jump of 1.09.

We are also very pleased with the scholarship attained by the pledge class, which averaged 3.41. This placed them fifth on campus in the pledge class standings.

The Sigma Chi Foundation Award, which is presented to the fraternity at MIT with the highest scholarship, is presented on a yearly basis. We have our sights set equally as high for the second term of this year. With work, co-operation, and maybe a little luck we might bring Sigma Chi's trophy back home for Rush Week and next year.

Pete Kuempel, Fall Scholarship Chrm.

## NEW CHAPTER ADVISER

An increasingly familiar figure in the Alpha Theta Chapter house is Eugene R. (Gene) Chamberlain, recently named chapter advisor. The youthful Denison University Sig replaces Robert C. Dean, Jr. who left Technology to accept a position in private industry. Gene Chamberlain's association with the Institute as Assistant Director of Admissions affords an excellent student-faculty communication for the chapter.

Born in 1920, Gene attended the Oak Park High School in his hometown of River Forest, Illinois. He was enrolled at Albert College, Bellville, Ontario, for a short time before entering the navy in 1940. He served as chief fire control man with various cruisers in the Pacific Theater of War, and was commissioned an Ensign in 1945. Following his discharge

Continued on Page 4

Handwritten notes and diagrams on the right margin, including a box with '420' and a circle with '400', and arrows indicating relationships between them.

## RUSHING OUTLOOK

Last term a committee met to recommend alterations on our present rushing system. The past system seemed to lack efficiency, a proper balance of activities, and in general, the "SIG" personality so essential in acquiring the best pledge class on the MIT campus. Basically, the rushing system remains the same. Besides our few alterations, there are also overall changes in the MIT rushing program.

The greatest change was made in the organization of rushing itself. In order to focus the chapter's rushing efforts, a three man committee will be in continuous charge of all rush week activities. These three men are responsible for moving rushees, activities, and any and all pertinent information to the vital places and persons as quickly as possible. By centralizing the chapter's activities, we felt it would speed up our operations and would allow us to meet more rushees, thus helping us to pledge the "pick of the crop."

In line with the last thought, it is exceedingly hard to see all of the six hundred rushees who come through rush week. The chapter always welcomes advice and recommendations on prospective Sigs from our alumni. In addition, you could assist the chapter even more by letting us know of prospective "Techmen" who may be considering a visit to the campus before submitting their applications for entrance. Alpha Theta would like to meet these men and could provide lodging in the house during their visit to MIT.

The second important change in the rushing system could properly be labeled "activities." This is purposely a very general category because it encompasses such things as sports, beach parties, sightseeing, and night life. But the purpose of the category is singlefold -- to entertain the rushee who is Sig material by letting him do what he most likes doing. In addition, this allows a few of the members to get to know this man much better than the entire chapter ever could in the short period of rushing.

Let me emphasize again that the entire system is as always directed at obtaining a top-notch pledge class, the members of which may soon thereafter become worthy Sigs.

Sigma Chi and Alpha Theta, have always prided themselves on close alumni-chapter relations. I know you will "ferret out" that prospective Sig and send him and a recommendation to 532 Beacon. Bob Smith



Auctioning off Many Year's Accumulation of Hall Closets

## FROM THE CONSUL'S STUDY

The second term is well under way and so is Alpha Theta. Elsewhere in this issue of the Beaver Sig are articles describing our attainments in scholarship, athletics, and the social side of life. When all these individual achievements are viewed as a whole they indicate continued progress for our chapter. But we must remember that "the rung of a ladder was never meant to rest upon, but only to hold man's foot long enough to enable him to put the other somewhat higher." Some of the rungs still to be scaled are the problems of our aging house, discussed in the last issue, the discriminatory clause in our international fraternity's constitution, the international's attitude toward drinking in our chapter houses, and our relations with the general public in the Back Bay area. Furthermore, we look for continued improvement in our scholarship, our athletic prowess, and the strengthening of that elusive something known as chapter spirit.

For the last several years MIT has been one of the leaders of the "educational approach" toward the removal of any discriminatory clauses in national fraternity constitutions. Under the leadership of the Inter-Fraternity Conference every chapter of each fraternity presently having a restrictive clause has been written to and asked to at least see that the issue comes up for debate at the national conventions. Our chapter has cooperated to its fullest extent and we look toward this June's Grand Chapter meeting at Toronto for some action on this issue.

Another issue to come up at this summer's Grand Chapter is the report of the committee of Maintaining Chapter Standards. Headed by our Grand Praetor William H. Carlisle Jr., it is considering the problem of drinking in our chapter houses. At Alpha Theta drinking has not posed any such problems. MIT imposes no regulations on us, believing that each living group should be free to legislate its own rules. At the present time our rules are simple and few: drinking is allowed only on the weekends, and no individuals may drink or store any alcoholic beverages in his room at any time. We feel the problem would be aggravated rather than improved if the international fraternity sought to strictly enforce its present "prohibition-type" ruling.

For the last several months the relations between the fraternities in Back Bay and our neighbors, have become slightly strained due to lack of parking space on Boston's streets. The doctor's have complained that there is no place for their patients to park because of all the student's cars. There are five fraternities in our block having over two hundred members, of which approximately fifty have cars. Yet we feel we have, as residents of Boston, the right to park on these streets. In order to attempt some amicable solution to the problem we, along with several other fraternities, have joined the Back Bay Association. Of course the ultimate solution to this problem lies in moving across the river to a new house.

I hope this glimpse of some of our current problems is of interest. We welcome any comments you might care to make, particularly on those areas which will be the concern of undergraduates and alumni as well at the coming Grand Chapter.

Mal Jones, Spring Consul

500

